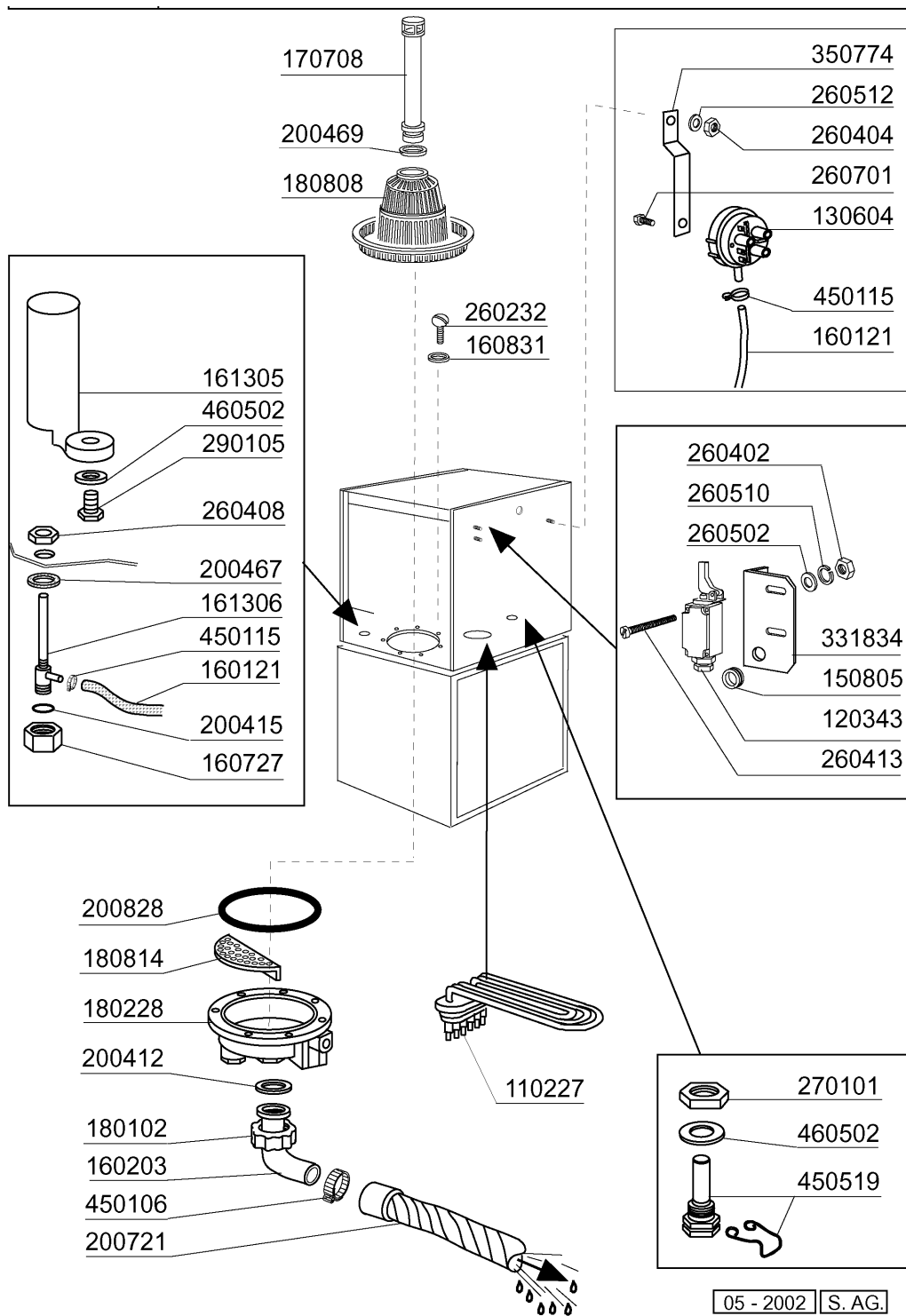


11-1998 S.A.G 01

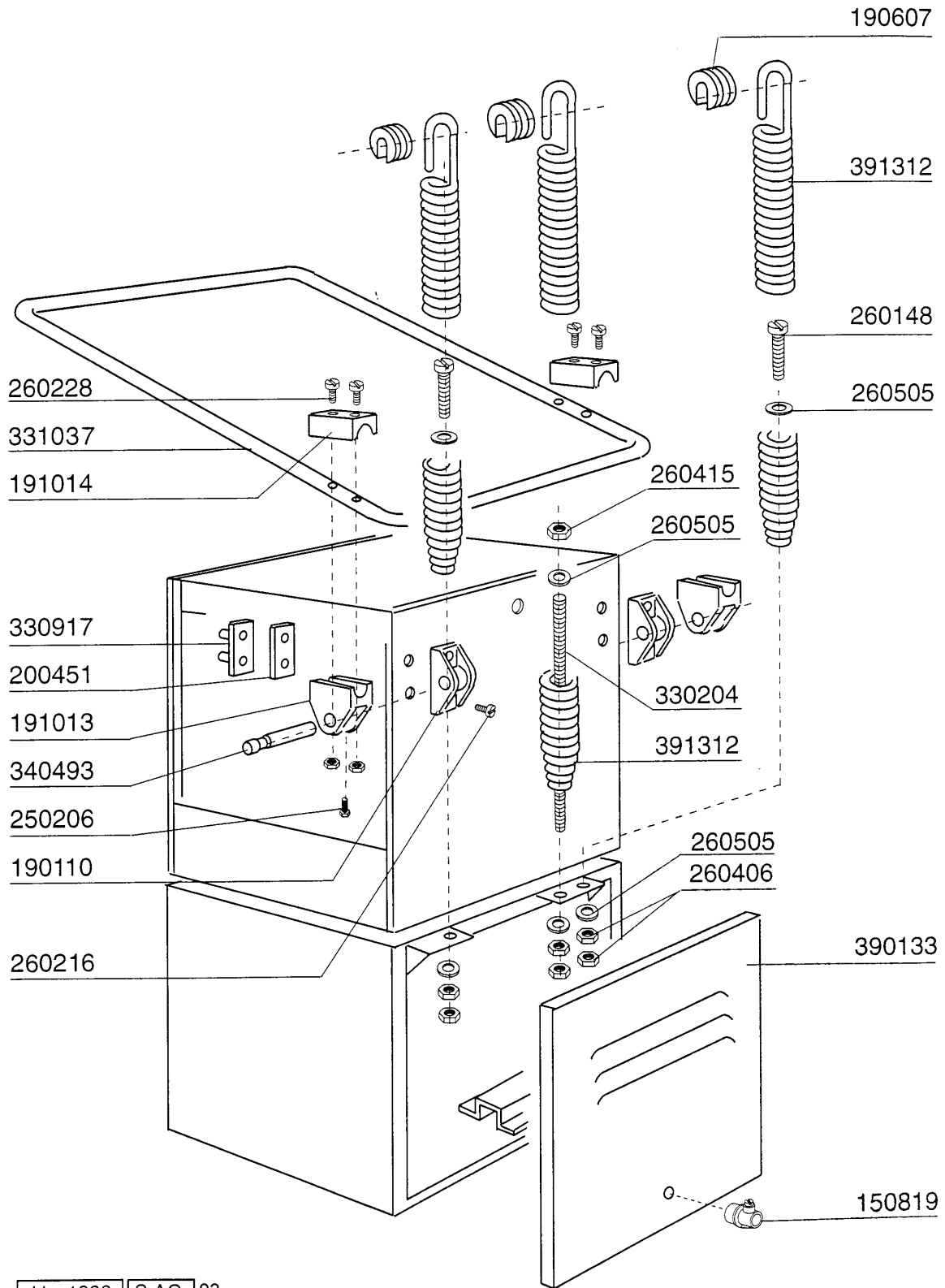
2 - Hood

| CODE | DESCRIPTION |
|-------------|---------------------------------|
| 160509 | FOOT SUPPORT |
| 160811 | WASHER F2 18X8.5X1 ALGOF |
| 161110 | BACK COVER S90-C85-140 |
| 180605 | RIGHT GUIDE F. DOOR C30-70 |
| 180606 | LEFT GUIDE F. DOOR C30-70 |
| 190637 | GUIDE FOR DOOR "C" |
| 190638 | ROLLER FOR "C" DOOR GUIDE |
| 200402 | SELF-ADHES.RUBB.SPONGE STRIPS |
| 200433 | SPONGY RUBBER RECT. 6X2,5 ADHE |
| 210203 | RUBBER FOOT 30 MM |
| 260147 | SCREW TE 8X12 SPECIAL |
| 320627 | FIXING PLATE F.GUIDES C30-70 |
| 320927 | DOOR C30 C70 |
| 321970 | GUIDE |
| 331919 | SPLASH GUARD FOR C75 (NEW HOOD) |




3 - Tank

| CODE | DESCRIPTION |
|--------|--------------------------------|
| 110227 | HEAT. ELEMENT 3000W 230/400V |
| 120343 | MICRO SWITCH (120364) |
| 130604 | PRESSURE SWITCH 80-50 1 LEVEL |
| 150805 | CABLE HOLDER 18X22X1 |
| 160121 | HOSE EPDM D. 5 X 9 |
| 160203 | ELBOW 1"1/2 N-S-F-C /DRAIN |
| 160727 | PLUG 1/2 NTP CAP |
| 160831 | WASHER F2 17X6X3 |
| 161305 | AIR CHAMBER F45-F80 |
| 161306 | HOSE FOR AIR CHAMBER F45-80 |
| 170708 | OVERFLOW PIPE H 215 X F3 C30-F |
| 180102 | DRAIN PIPE NUT 1"1/2 F45-55 |
| 180228 | TANK SUCTION BASIN WITHOU.PRES |
| 180808 | STRAINER F2-45-55-80 |
| 180814 | PROTECT.FILTER OF INLET PUMPE |
| 200412 | GASKET DRAIN 11/2" 45X33X3 |
| 200415 | AIR TRAP GASKET -F2 18,5X10X3 |
| 200467 | DUTRAL GASKET F. AIR TRAP |
| 200469 | STAND PIPE O RING 45X35,5X7 |
| 200721 | DRAIN HOSE 28X35 2MT. |
| 200828 | O-RING 183,75X190,81X3,53 |
| 260232 | STAINL.ST TB SCREW 6X25 B15-6- |
| 260402 | STAINLESS STEEL NUT D4 UNI 55 |
| 260404 | STAINLESS STEEL NUTS D6 UNI 55 |
| 260408 | S/S NUTS D.12 |
| 260413 | STAINLESS STEEL NUTS D5 SPEC. |
| 260502 | S/S FLAT WASHER D.4 |
| 260510 | GROWER WASHER D.4 |
| 260512 | ST/ST GROWER WASHER D6 |
| 260701 | SCREW 3,5X9,5 |
| 270101 | HEXAGON LOCK NUT 1/2" |
| 290105 | BRASS-TE-PLUG 1/2" |
| 331834 | BRACKET FOR MICRO SWITCH C70-7 |
| 350774 | BRACKET |
| 450106 | CLAMP FE ZN 32-44 H=12,2 |
| 450115 | ELASTIC CLAMP D.8,3/7,8 |
| 450519 | TANK THERMOSTAT SHIELD C-F |
| 460502 | GASKET 30X21X2 |

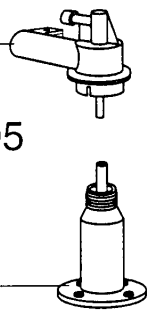



4 - Handle

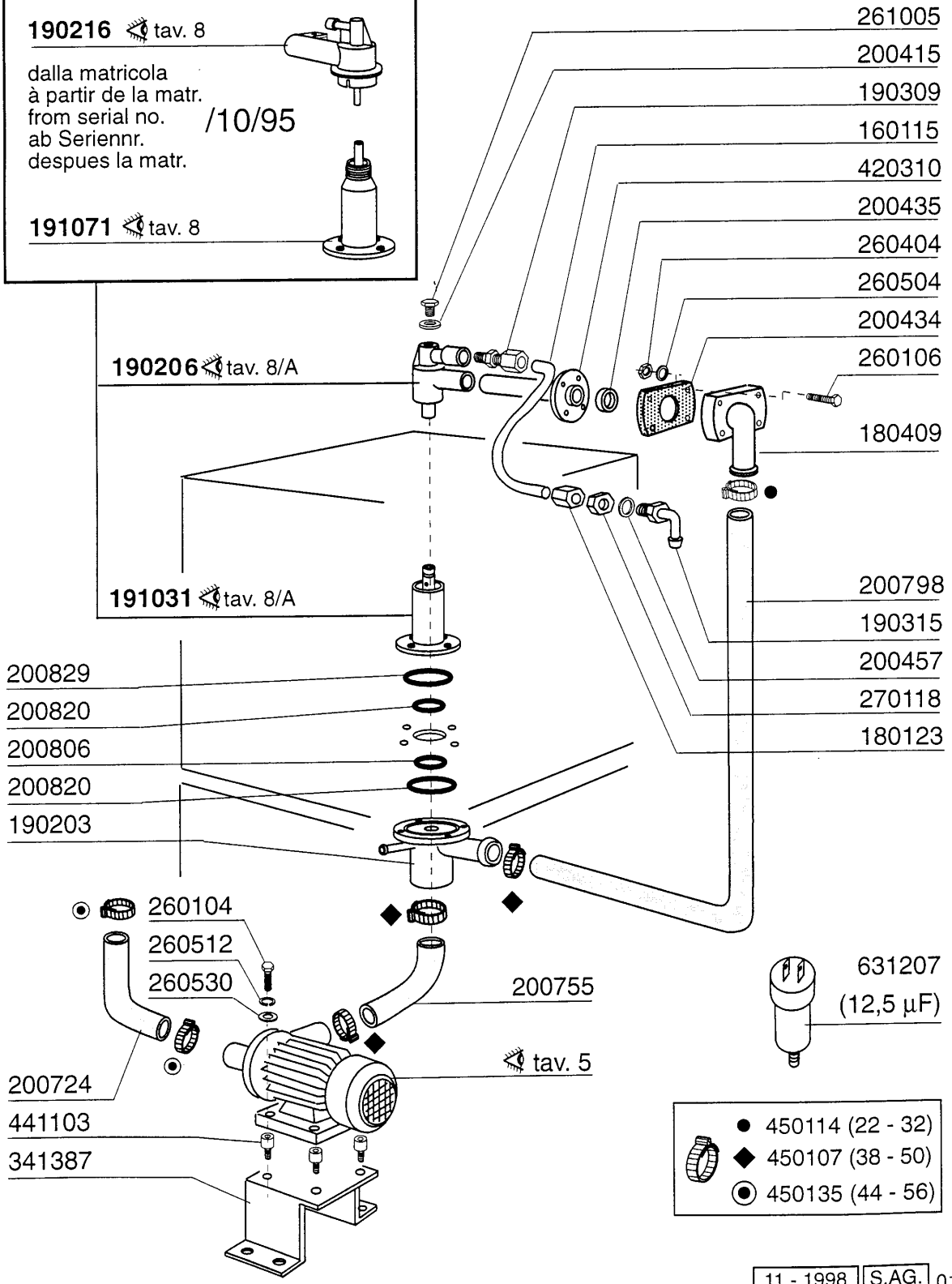
| CODE | DESCRIPTION |
|-------------|--------------------------------|
| 150819 | CABLE HOLDER PG16 WITH HOLE |
| 190110 | SUPPORT HANDLE C30 BLACK |
| 190607 | HANDLE BUSH C30-70 |
| 191013 | HINGE F. SUPPORT C30-C70 |
| 191014 | FLANGE F. HANDLE C30-70 |
| 200451 | GASKET COUNTERFL.C30 30X100X3 |
| 250206 | GRUB SCREW D.6 |
| 260148 | SCREW TE 8X130 |
| 260216 | SCREW TCP 6X20 |
| 260228 | STAINL.ST SPECIAL SCREW 6X42 3 |
| 260406 | NUT 8MA |
| 260415 | STAINLESS STEEL SELF-LOCKING N |
| 260505 | STAINL.STEEL FLAT WASHER D8 |
| 330204 | SPRING HOOK C95/155-LC380 |
| 330917 | COUNTER FLANGE F.HANDLE SUPP.C |
| 331037 | HANDLE C95-155-165 ISOLATED |
| 340493 | PIN F. HINGE C30 |
| 390133 | BACK PANEL C70 |
| 391312 | SPRING HANDLE C30-C70 |




190216  tav. 8

dalla matricola
à partir de la matr.
from serial no. /10/95
ab Seriennr.
después la matr.



191071  tav. 8



-  450114 (22 - 32)
-  450107 (38 - 50)
-  450135 (44 - 56)

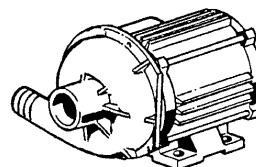
5 - Wash

| CODE | DESCRIPTION |
|--------|--------------------------------|
| 160115 | PL.TUBE.D.9.5 B41 (3/8) C30- |
| 180123 | CONNECTION NUT / RINSE 5/8 C30 |
| 180409 | UPPER CONNECTOR F. WASHING C30 |
| 190203 | LOWER TEE WASH-RINSE F2-45-55- |
| 190206 | UPPER WASH-RIN ARM SUPPORT C30 |
| 190216 | UPPER WASH ARM SUPPORT C75 |
| 190309 | CONNECTION STRAIGHT 3/8"B41C30 |
| 190315 | ELL RINSE C30-70 |
| 191031 | LOWER WASH ARM SUPPORT C30-F80 |
| 191071 | LOWER WASH ARM SUPPORT C75 |
| 200415 | AIR TRAP GASKET -F2 18,5X10X3 |
| 200434 | GASKET CONNECTION C30 R50 |
| 200435 | GASKET WASH.F2 D.40 C30-70 |
| 200457 | GASKET D.24X16X3 NEOPRENE |
| 200724 | PUMP INLET HOSE C30 - C70 |
| 200755 | DELIVERY HOSE C70 |
| 200798 | CONNECTION HOSE FOR C75 |
| 200806 | O-RING 2,62X13,10X18,34 |
| 200820 | O-RING151 46,99X5,33X57,6 |
| 200829 | O-RING 81,92X92,58X5,33 |
| 260104 | STAINL.ST TE-SCREW A2 6X16 UNI |
| 260106 | SCREW TE 6X25 |
| 260404 | STAINLESS STEEL NUTS D6 UNI 55 |
| 260504 | ST/ST FLAT WASHER D6 |
| 260512 | ST/ST GROWER WASHER D6 |
| 260530 | STAINL.ST WASHER 7X22X2 |
| 261005 | SCREW F. TEE UP.WASH F2-B41 |
| 270118 | NUTS FOR ELBOW 5/8 C30-70 |
| 341387 | PUMP SUPPORT C70 |
| 420310 | LOW./UPP.WASH PIPE C30 - 70 |
| 441103 | PUMP FEET |
| 450107 | CLAMP FE ZN 38-50 H=12,2 |
| 450114 | CLAMP FE ZN.22-32 H=12,2 |
| 450135 | CLAMP FE ZN. 44-56 H=12,2 |
| 631207 | CONDENSER 12,5MF. 450V 85C |

100384 (220/240 V 50 Hz)

100612 (220 V 60 Hz)

HP 1 - Kw 0,75 (1219)

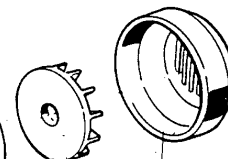
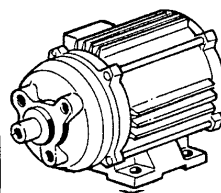
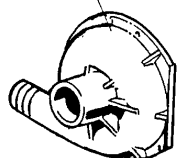


630214

630510

630410

630113



630219

630325

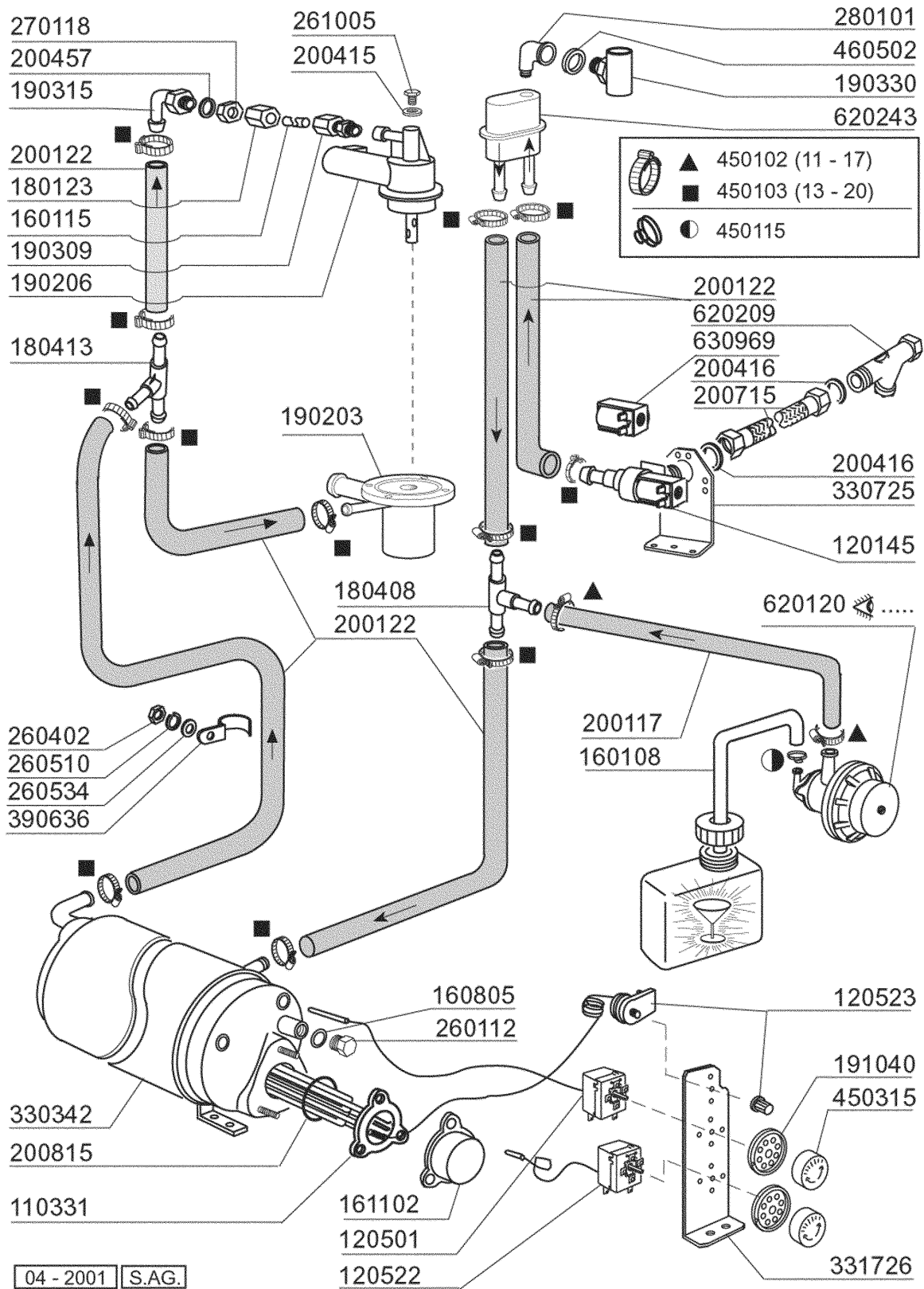
631627 (50 Hz)

631643 (60 Hz)

6 - Pump

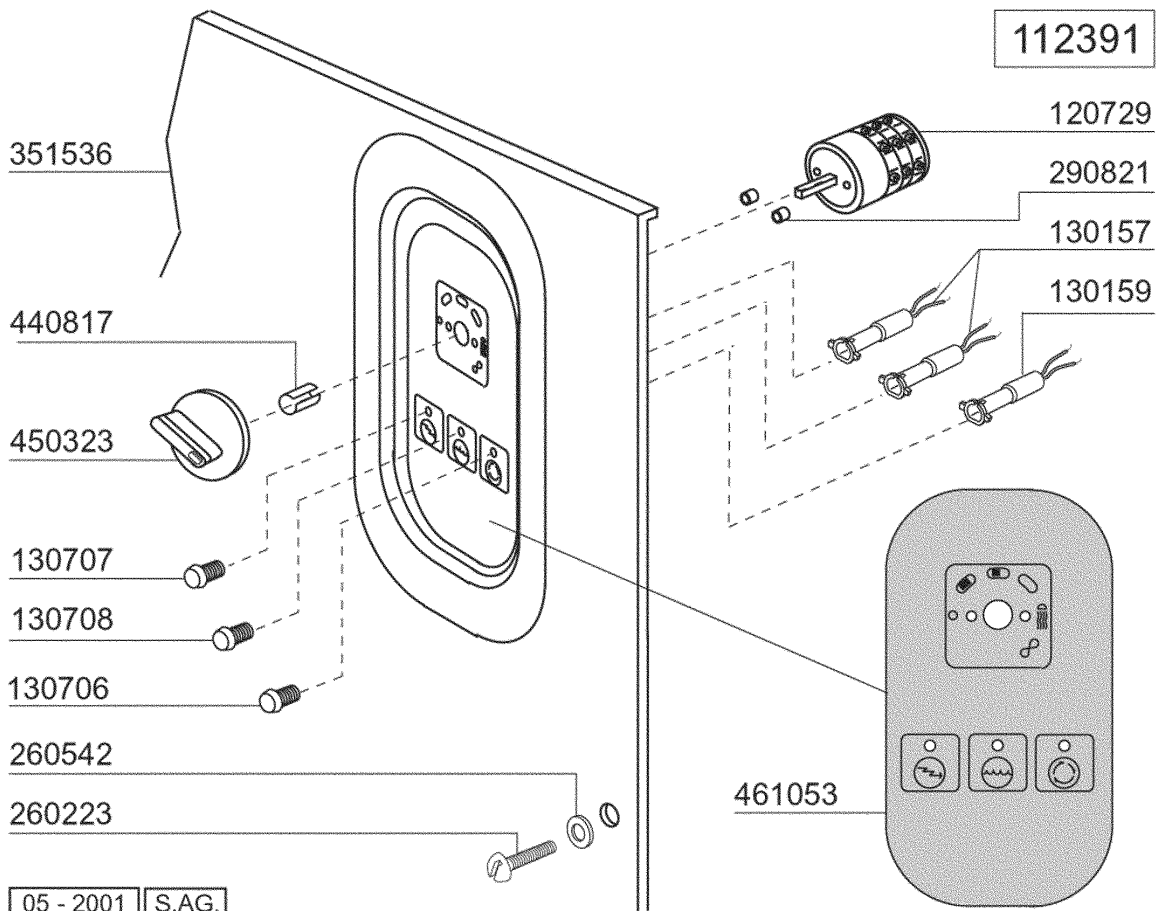
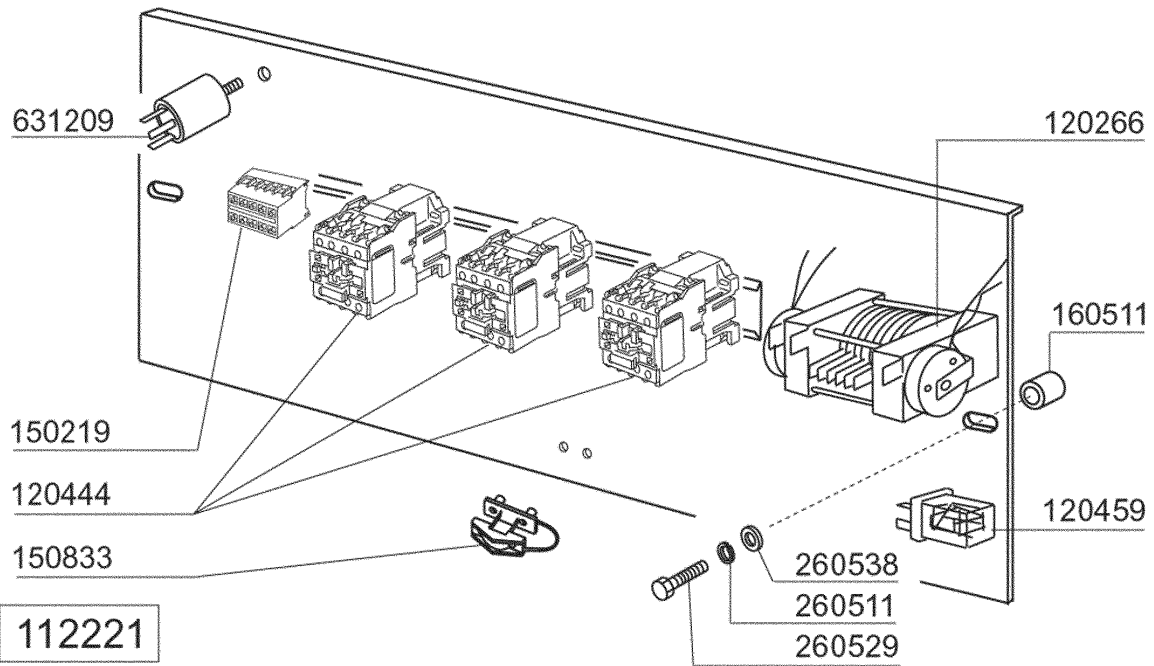
| CODE | DESCRIPTION |
|-------------|--------------------------------|
| 100384 | PUMP HP 1 240/1-50HZ-1219 1219 |
| 100612 | PUMP HP 1 220/1/60HZ F 1219 |
| 630113 | VOLUTE FIR HP0,5-1,55 |
| 630214 | FLANGE PUMP HP0,75-1-1,5 |
| 630219 | FAN HOUSING FIR HP.0,75-1 |
| 630325 | COOLING FAN F.PUMP 1219/2241 |
| 630410 | O-RING PUMP FI HP0,5-0,75-1 |
| 630510 | PUMP SEAL HP0,5-0,75 |
| 631627 | PUMP IMPELLER FI D103 HP 1-1,5 |
| 631643 | IMPELLER HP1/1,5 60HZD.90-1219 |

7 - Rinse assembly



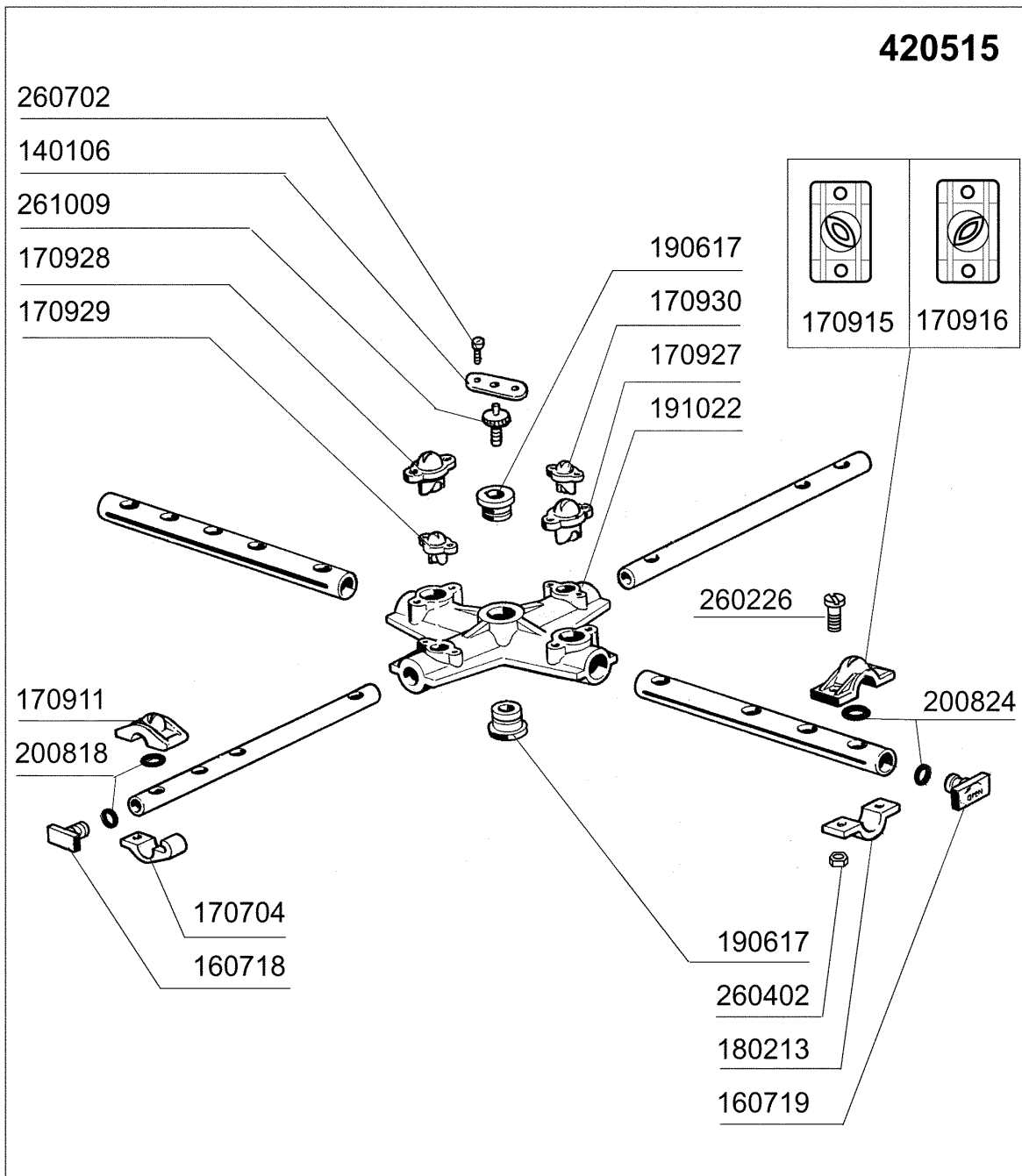
7 - Rinse assembly

| CODE | DESCRIPTION |
|--------|--------------------------------|
| 110331 | HEAT.ELEMENT 4200W 230/400V |
| 120145 | SOLENOID VALVE 12 LT 1 WAY |
| 120501 | THERMOSTAT 30/90°C |
| 120522 | TANK THERMOSTAT 90° |
| 120523 | SAFETY THERMOSTAT 110° |
| 160108 | INJECT.INLET HOSE D.8X5 |
| 160115 | PL.TUBE.D.9.5 B41 (3/8) C30- |
| 160805 | GASKET D.8 |
| 161102 | ELEMENT COVER MOPL. |
| 180123 | CONNECTION NUT / RINSE 5/8 C30 |
| 180408 | TEE-NIPPLE F.INJECT.W/CENTR.RE |
| 180413 | TEE NIPPLE D.11,5 - RINSE ASSE |
| 190203 | LOWER TEE WASH-RINSE F2-45-55- |
| 190206 | UPPER WASH-RIN ARM SUPPORT C30 |
| 190309 | CONNECTION STRAIGHT 3/8"B41C30 |
| 190315 | ELL RINSE C30-70 |
| 190330 | TEE FOR VAACUM BREAKER |
| 191040 | FRAME F.THERMOSTAT KNOB |
| 200117 | RUBBER HOSE 7X16 |
| 200122 | HOSE 11X19 |
| 200415 | AIR TRAP GASKET -F2 18,5X10X3 |
| 200416 | GASKET D. 3/4" |
| 200457 | GASKET D.24X16X3 NEOPRENE |
| 200715 | HOSE WATER INLET 2M STAINL.ST |
| 200815 | O-RING F. HEAT.ELEM. |
| 260112 | STAINLESS STEEL TE-SCREW 8X16 |
| 260402 | STAINLESS STEEL NUT D4 UNI 55 |
| 260510 | GROWER WASHER D.4 |
| 260534 | WASHER |
| 261005 | SCREW F. TEE UP.WASH F2-B41 |
| 270118 | NUTS FOR ELBOW 5/8 C30-70 |
| 280101 | CRANK F.F 1/2" |
| 330342 | BOILER C95-C155-C165 |
| 330725 | STANDARD BRACKET F.SOLEN.VALV |
| 331726 | BRACKET FOR 3 THERMOSTATS |
| 390636 | BRACKET |
| 450102 | CLAMP FE ZN 11-17 H=9 |
| 450103 | CLAMP FE ZN. 13-20 H=9 |
| 450115 | ELASTIC CLAMP D.8,3/7,8 |
| 450315 | KNOB F. THERMOSTAT 90° |
| 460502 | GASKET 30X21X2 |
| 620120 | RINSE AID INJECTOR |
| 620209 | INLET WATER FILTER |
| 620243 | VACUUM BREAKER (WITHOUT KIT) |
| 630969 | COIL S4216 220/50HZ |



8 - Control Box

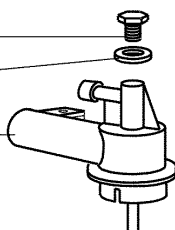
| CODE | DESCRIPTION |
|--------|---------------------------------|
| 112221 | WIRING C75 |
| 112391 | WIRING C75 |
| 120266 | TIMER 6 CAMS 75/120/180" |
| 120444 | CONTACTOR 9A 220V 50HZ |
| 120459 | AUXIL.RELE 16A 220V |
| 120729 | EIGHT-POLE SWITCH 16A 5 POS. |
| 130157 | GREEN LED FOR BR-BC-C-SERIES - |
| 130159 | ORANGE LED FOR C-SERIES - 220V |
| 130706 | ORANGE LENS COVERS (C-SERIES) |
| 130707 | TRANSPARENT LENS COVERS (C-SER) |
| 130708 | GREEN LENS COVERS (C-SERIES) |
| 150219 | TERMINAL BLOCK 5P MMQ165VD26 |
| 150833 | CABLE HOLDER BC/BR |
| 160511 | SPACER 7,93 MOP |
| 260223 | M5X12 MSH/HD SCREW SPECIAL S/S |
| 260511 | GROWER WASHER D.5 |
| 260529 | WASH RACKSUPP.WASHER D24 STAIN |
| 260538 | WASHER 18X6X1,5 ST/ST |
| 260542 | WASHER D.5 |
| 290821 | DISTANCE PIECE FOR SWITCH |
| 351536 | FRONT PANEL |
| 440817 | SNAP RING LSCB/1853/17/00 |
| 450323 | KNOB FOR BC-BR-C95-C155 |
| 461053 | PLATE C75 |
| 631209 | ANTI-NOISE FILTER |



9 - Wash arm

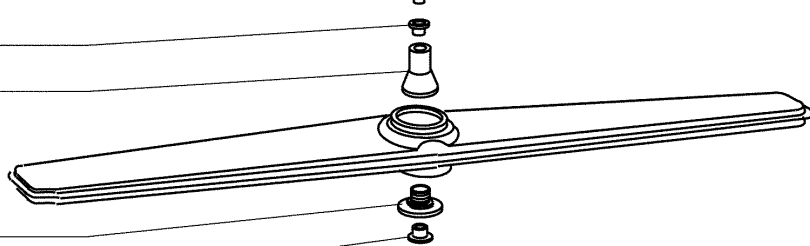
| CODE | DESCRIPTION |
|--------|--------------------------------|
| 140106 | PLATE F.CLAMP SCREW/WASH-RINSE |
| 160718 | PLUG F. RINSE ARM F2-C34M |
| 160719 | PLUG FOR WASH ARM D.18 |
| 170704 | RINSE NOZZLE BOTTOM F-B-C33 |
| 170911 | RINSE JET B23-F2-C34 |
| 170915 | RIGHT JET B-F |
| 170916 | LEFT JET B-F |
| 170927 | WASH JET F2-C-GRAY |
| 170928 | IDLE JET F2-C-GRAY |
| 170929 | RINSE JET F2-C-GRAY |
| 170930 | IDLE JET F2-C-GRAY |
| 180213 | FLANGE F.JET LOCKING F2-C34 |
| 190617 | BUSH |
| 191022 | WASH ARM CENTRAL CROSS F-B |
| 200818 | O-RING 1,78 X 6,75 X 10,31 |
| 200824 | O-RING 1,78X12,42X15,98 |
| 260226 | STAINL.ST TCP SCREW 4X12 A2 UN |
| 260402 | STAINLESS STEEL NUT D4 UNI 55 |
| 260702 | SELF-TAPPING SCREW 4,2X9,5 DIN |
| 261009 | RETAIN.SCREW FOR WASH-RINSE AR |
| 420515 | WASH-RINSE ARM F45-C85 |

261005
200415
190216

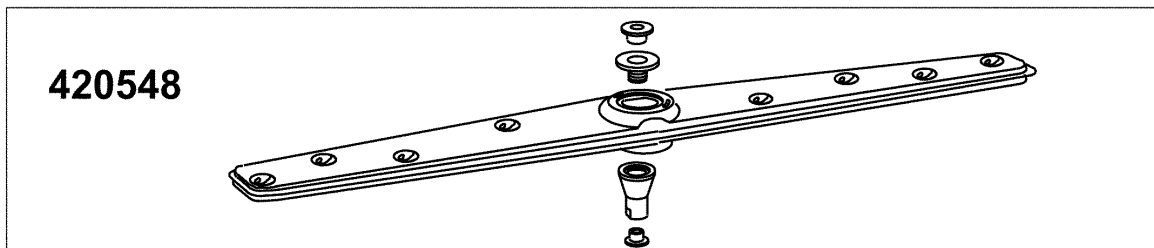


dalla matricola
à partir de la matr.
from serial no. **10/95**
ab Seriennr.
despues la matr.

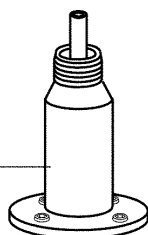
190617
191069



191070
190617



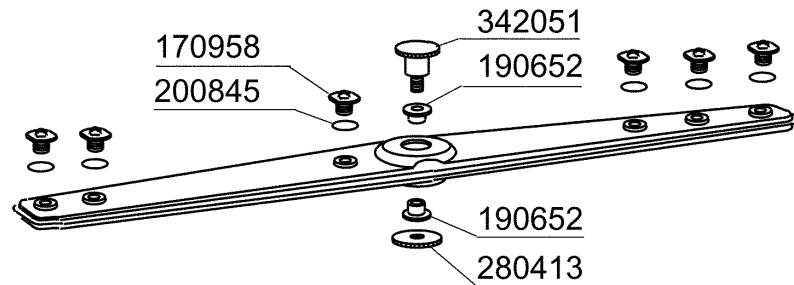
191071



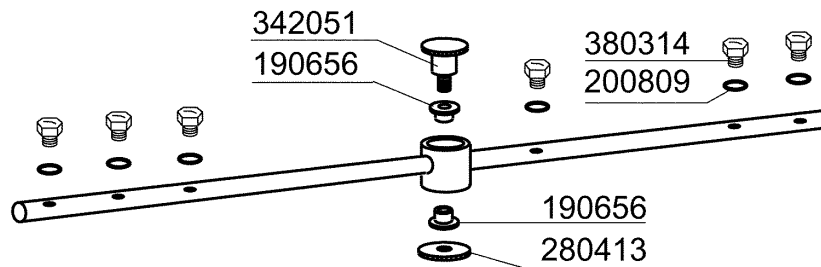
10 - Wash arm

| CODE | DESCRIPTION |
|-------------|--------------------------------|
| 190216 | UPPER WASH ARM SUPPORT C75 |
| 190617 | BUSH |
| 191069 | WASH ARM CENTER (FC - MACHINES |
| 191070 | LOCK NUT FOR WASH ARM CENTER (|
| 191071 | LOWER WASH ARM SUPPORT C75 |
| 200415 | AIR TRAP GASKET -F2 18,5X10X3 |
| 261005 | SCREW F. TEE UP.WASH F2-B41 |
| 420548 | FC WASH ARM (ST/ST) |

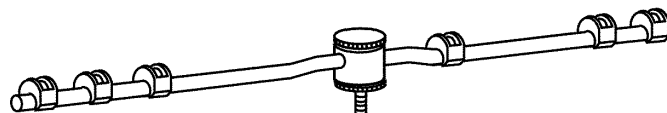
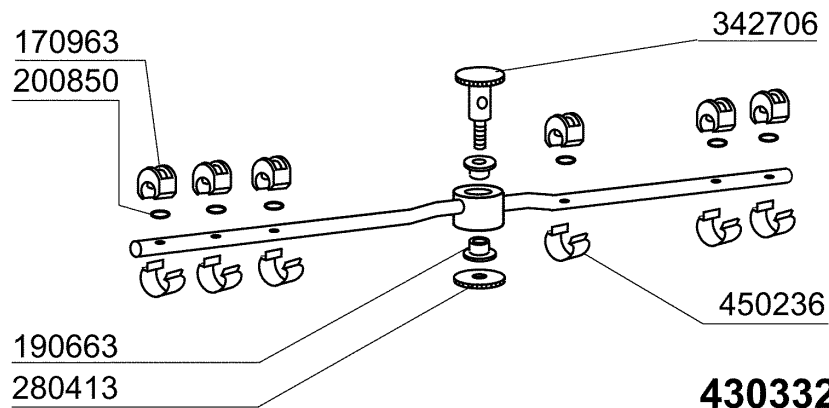
sino alla matricola
jusqu'à la matr.
up to serial no.
bis Seriennr.
hasta la matr.
/10/95



dalla matricola
à partir de la matr.
from serial no.
ab Seriennr.
despues la matr.
11903/11/98



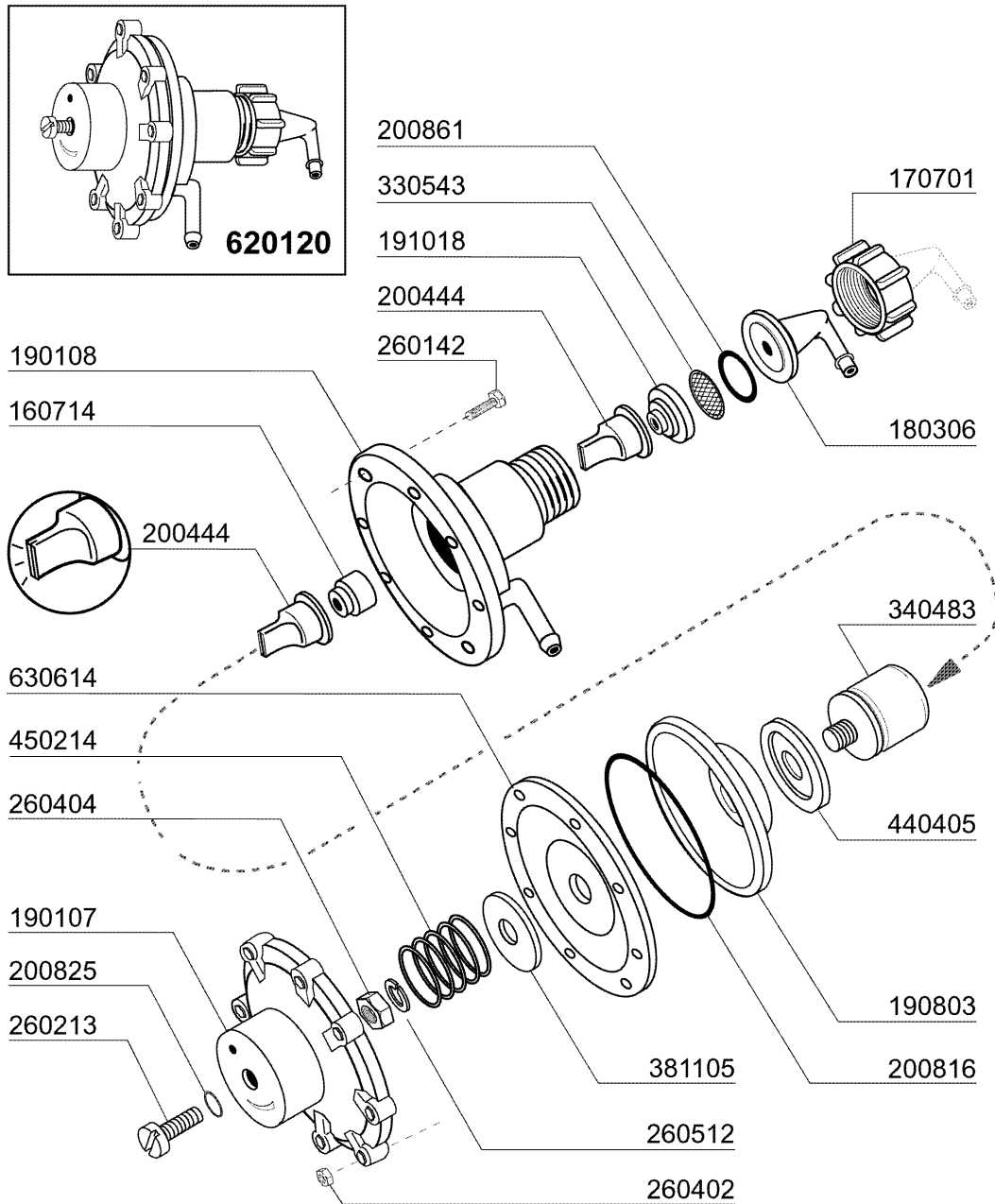
dalla matricola
à partir de la matr.
from serial no.
ab Seriennr.
despues la matr.
3551/04/00



430332

11 - Rinse arm

| CODE | DESCRIPTION |
|-------------|--------------------------------|
| 170958 | RINSE JET FOR FC53-543 |
| 170963 | RINSE JET X FC |
| 190652 | RINSE ARM BUSH FC |
| 190656 | BUSH RINSE ARM FC |
| 190663 | BUSH |
| 200809 | OR GASKET 1,78X8,73X12,29 |
| 200845 | O RING 109 2,62X9,13X14,37 |
| 200850 | O-RING |
| 280413 | RETAIN.LOCK NUT FOR FC RINSE A |
| 342051 | RINSE ARM SUPPORT FC |
| 342706 | SHAFT |
| 380314 | RINSE JETS 801/HR |
| 430332 | RINSE ARM FC 01/00 |
| 450236 | SPRING FOR WASHER 170963 |



12 - Rinse aid injector

| CODE | DESCRIPTION |
|--------|--------------------------------|
| 160714 | PLUG FOR RINSE AID INJECTOR MO |
| 170701 | LOCK NUT 1/2" F.INJECTOR |
| 180306 | NIPPLE F.RINSE AID INJECTOR |
| 190107 | COVER FOR RINSE AID DISPENSER |
| 190108 | VOLUTE FOR RINSE AID DISPENSER |
| 190803 | GASKET SUPPORT RING F.INJECT |
| 191018 | FILTER SUPPORT RINSE AID INJEC |
| 200444 | SUCTION VALVE RINSE INJECTOR |
| 200816 | O-RING 2,5X59,2X64,2 RINSE INJ |
| 200825 | O-RING 3X5X11 RINSE INJECTOR |
| 200861 | O-RING 14X18X2 |
| 260142 | SCREW TE 4X16 |
| 260213 | SCREW TCP 5X25 |
| 260402 | STAINLESS STEEL NUT D4 UNI 55 |
| 260404 | STAINLESS STEEL NUTS D6 UNI 55 |
| 260512 | ST/ST GROWER WASHER D6 |
| 330543 | FILTER RINSE AID INJECTOR D.17 |
| 340483 | PISTON FOR RINSE AID DISPENSER |
| 381105 | DIAPHRAGME DISC |
| 440405 | GASKET FOR RINSE AID INJ. |
| 450214 | SPRING RINSE AID INJECTOR |
| 620120 | RINSE AID INJECTOR |
| 630614 | DIAPHRAGM RINSE INJECTOR |